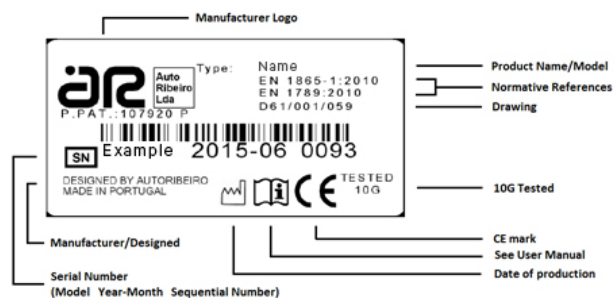




Rua de S. Caetano, 551 Apartado 526  
4411-701 Canelas; Vila Nova de Gaia, Portugal  
Telf: +351 227157100 , Fax: +351 2271244  
support@arequipment.com  
www.arequipment.com



### SERIAL NUMBER

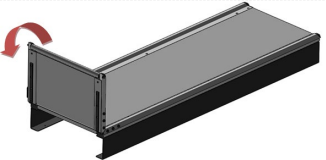
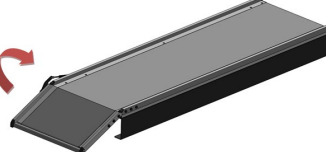


**User Manual:  
Equipment E250F (Flat)**

## Equipment E250F

The E250F is manually operated equipment, developed for use in vans. Its main objective is to establish the respective stretcher trolleys or monoblocs to various types of vans. This product is developed and manufactured by Auto Ribeiro Lda.

### OPERATING MODE / USE

<b><u>System Lock / CLOSING</u></b>	
	1° - Opening the ramp equipment.
	2° - Closing the ramp equipment

### SPECIFICATIONS

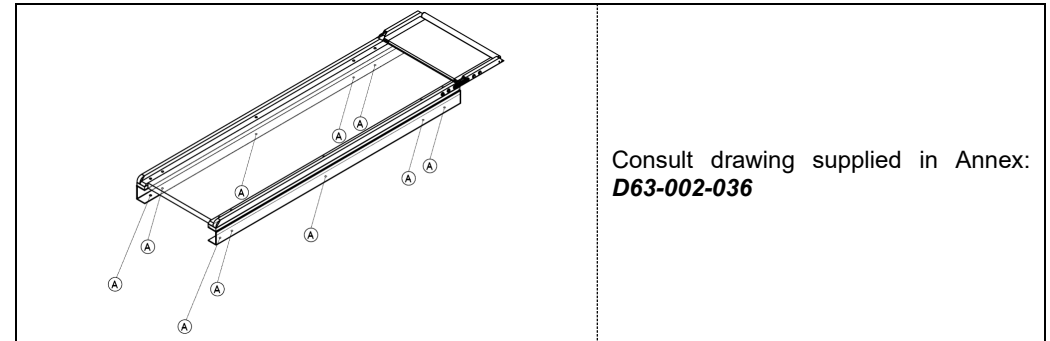
- Approximate Weight: 66 kg
- Approximate Dimensions : 1933 x 615 x 590 mm

### MAINTENANCE



- Perform visual inspection every fifty cycles of use.
- Lubrication elements of mechanical operation semiannually with high viscosity lubricant.
- Verification of clamping connection elements quarterly. Proceed to adjust if necessary.
- Check quarterly pitch closures. Proceed to adjust if necessary.

### FIXATION ON THE FLOOR



### FIXING ZONE STRETCHERS



### CENTER OF GRAVITY (INCLUDING MASS 126kg)

