

P500

Wheelchair lift

areequipment



CE

USE AND MAINTENANCE MANUAL

Patented

MAN AR 56/05/16/00
MAN AR (Manual Reference /Month of Revision/ Year of Revision / Revision)

Address

Head office
Rua de S. Caetano 459 / 519
Apartado 526
4411-701 Canelas VNG
Portugal

T. +351 227 157 100
F. +351 227 121 144
autoribeiro@autoribeiro.com

South delegation
Rua Olival Minas, nº. 7
Quintanilho
Apartado 02, EC Vialonga
2626-908 Vialonga

T. +351 210 998 814

This manual is divided in eight sections with their own symbols.

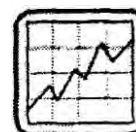
Section A (Information)

Important general information to become familiar with the wheelchair lift. Indications of the unit and serial number together with important information for the operator are included as well.



Section B (Technical specifications)

This section includes all the specifications for the lifting platform.



Section C (Safety information and devices)

All the information related to the safety of the unit and the operator .



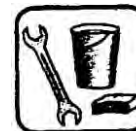
Section D (Operator)

TAll the information for the operator and his competence. There is also the description of the unit movements.



Section E (Maintenance)

All the information related to the unit regular maintenance



Section F (Warranty)



Table of contents

SECTION A INFORMATION

A.01 General information

A.02 Platform identification plate

A.03 Other plates

A.04 Information for the user

SECTION B PERFORMANCES AND SPECIFICATIONS

B.01 Allowed use

B.02 Technical features

B.03 Overall dimensions

B.04 Unit diagrams

SECTION C SAFETY INFORMATION AND DEVICES

C.01 General safety information

C.02 Controls and movements

C.03 Safety devices

C.04 Emergency

SECTION D OPERATOR

D.01 Necessary requirements

SECTION E MAINTENANCE

E.01 General instructions for the maintenance

E.02 Frequency of maintenance

E.03 Service table

E.04 Disposal

SECTION F WARRANTY

F.01 Warranty

SECTION A INFORMATION

Section A.01 (general information)

This Manual has been created in compliance with Directive 2006/42/CE, and according to requirements UNI EN 12100-2 in use. It contains all the necessary information for the correct use and maintenance of the platform lift.

SAFETY SYMBOLS

Inside the manual there are symbols and texts. These symbols have the function of illustrating the advice or the suggestions for the different situations.

INSTRUCTIONS

Suggested or forbidden way of use for the operator



ATTENTION

This is used to inform the operator about situations or conditions that may result dangerous for himself or for the load.



DANGER

Way of use may result dangerous for the operator or other person in the surroundings of the unit.



Section A.02 (Description of the platform)

The wheelchair lift enable the access to vehicles to disabled persons by giving them increased autonomy in movement

The patented working system is actuated by a remote control which releases the opening and lowering of the platform till it reaches the ground and the subsequent lifting and closing of the platform.

It works by an electro-hydraulic box powered by the vehicle battery.

Section A.03 (stickers and plates)



Warning

- 1 • The incorret usage of the lift can cause trouble to people and things
- 2 • Consult the use and service manual before usign the lift
- 3 • Check the efficiency and maintenance status any time you use the lift
- 4 • Make sure the vehicle brakes are on
- 5 • The lifting of loads exceeding 360kg is forbidden
- 6 • Keep the working area free from obstacles of any kind during usage
- 7 • keep the safety distance and use the product with caution to avoid damages and wounds.



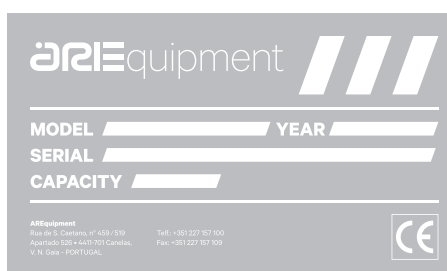
Use instructions

Opening and lowering

- 1 • Open wide the vehicle doors
- 2 • Switch on the lift eletric system
- 3 • Press the button down/ deploy of the remote control until complete opening
- 4 • Keep the button pressed until the platform reaches the ground

Lifting and closing

- 1 • Press the button up/stow of the remote control until the platform is at the same level as the vehicle floor
- 2 • After completing the lifting operation, make sure the platform is fully free before closing
- 3 • Press the same button to complete the closing operation
- 4 • Switch off the lift eletric system
- 5 • Close the vehicle doors



Section A.04 (Information for the user)

From now on the company Auto Ribeiro is indicated as the manufacturer of the unit.
The use instructions of this manual are those indicated by Auto Ribeiro.



ADVICE: - The lift is to be used to load and upload disabled people on wheelchairs.
Any other usage is to be considered as improper and might cause damage to goods or people

- Read all safety labels of the unit before starting using it.
- The lift is always to be used on homologated vehicles
- It is forbidden to use the lift for disabled people if the platform is not equipped with the grab handles.



ATTENTION: The technical specifications , the capacity labels as well as the rest of the information of this manual refer to the maximum unit performance as it is made by the Manufacturer.

Any welding, damaging of electrical or mechanical devices, replacing of non genuine spare parts and removing of protection parts or devices are forbidden.

Maintenance has to follow the indications and timing shown in Section G of this manual.



DANGER: - Park the vehicle out of the traffic flow, on a flat horizontal area and make sure the working area of the platform is wide enough and free from obstacles.

- Always engage the emergency vehicle brake, for safety reasons, before starting the lift.
- The operator must make sure there are no persons, animals or things that interfere between the platform and the vehicle before starting any operation.
- Avoid using the lift if anomalies in the systems are noticed.
- Stop any type of operation if a risk of fall for the disabled person or difficulties by the operator are noticed .

-
- Make sure the subject is always in perfect balance on the platform and it does not exceed the nominal capacity of 360kg.
 - The disabled person is always to be positioned with the back to the inside of the vehicle. Brake the wheelchair during the lifting and lowering operations.
 - Avoid any clothes or objects that could get caught in some parts of the machine and jeopardize its correct performance.
 - Always bring back the unit to its closed position inside the vehicle after each usage.

RESPONSIBILITY TASKS

Tasks:

We refer to operator's responsibility related to the use of the unit . These responsibilities go from the starting of the power system to the usage of the different parts and their maintenance.

The operator must know the safety rules, the relevant devices and the correct usage of the controls.

Responsibility:

The operator is directly responsible for the proper unit use ,maintenance and any action related to the above-mentioned uses .

SECTION B PERFORMANCES AND SPECIFICATIONS

Section B.01 (Allowed use)

The project of the MARIANI electro hydraulic lifting platform has been conceived to enable the transportation of persons with walking disabilities and, in particular, an easy access to vehicles for those who are on wheelchairs.

The wheelchair lift is in compliance with the following directives:

2006/42/CE

2001/85/CE

93/42/CE updated by directive 2007/47/CE

72/245/CE and subsequent modifications

and they also comply with following International rules:

ISO 7637-1

ISO 11452-2

ISO 11452-4

EN 1756-2

EN ISO 13857

EN 12182-2012

Section B.02 (Technical features)

Power 12/24 VOLT

Weight capacity 360 KG

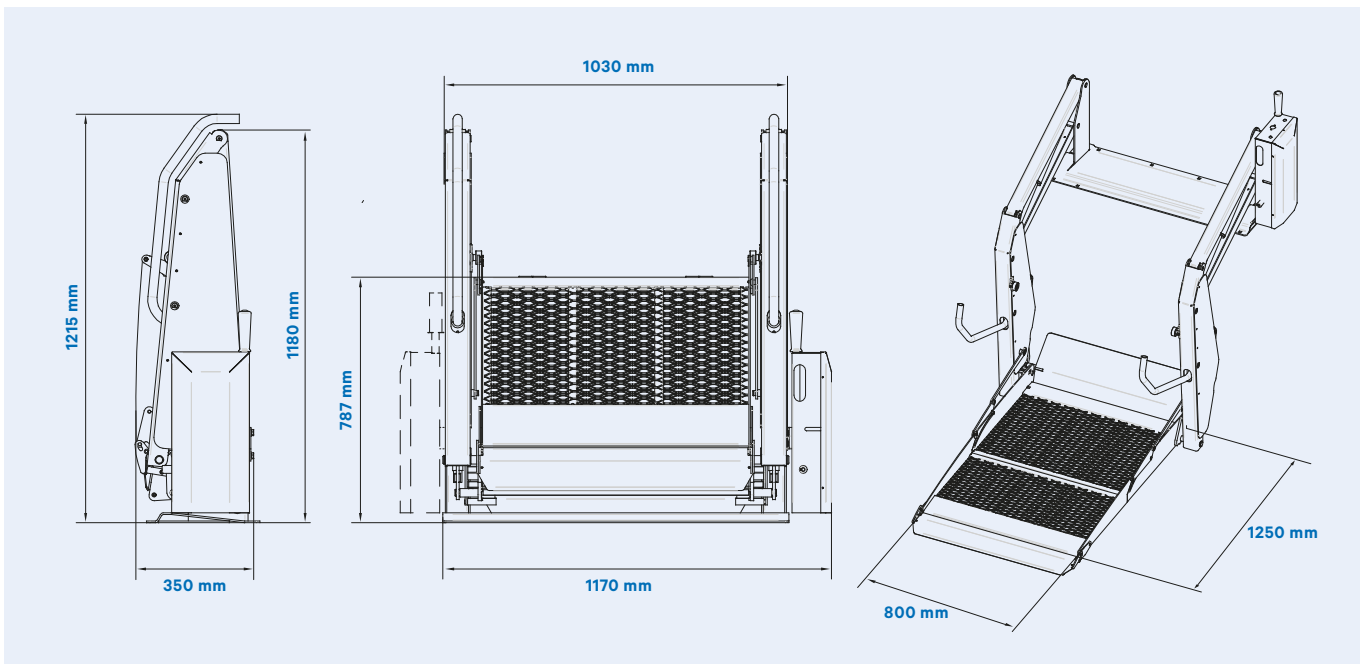
Max lifting height 110 cm

Total weight of the unit 135 KG

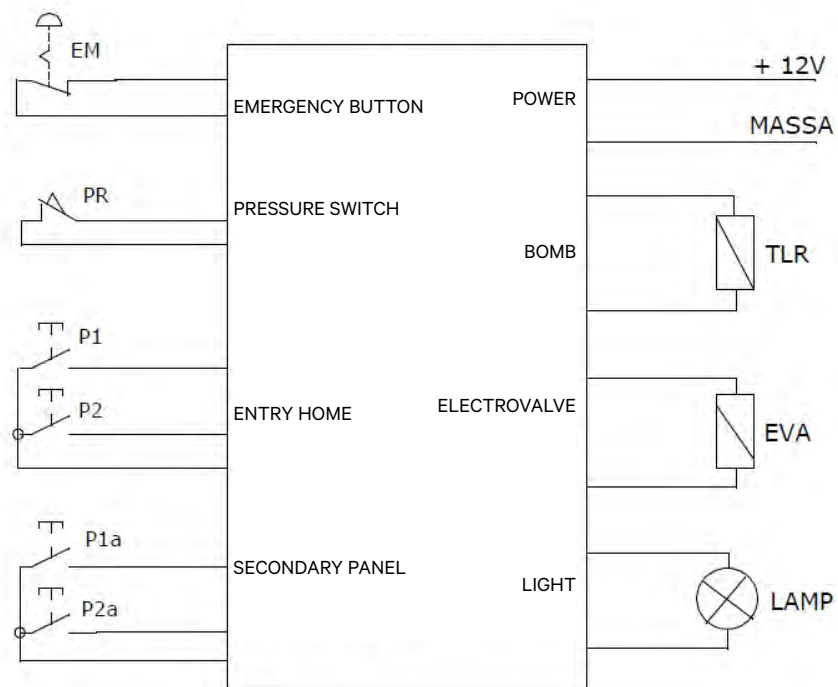
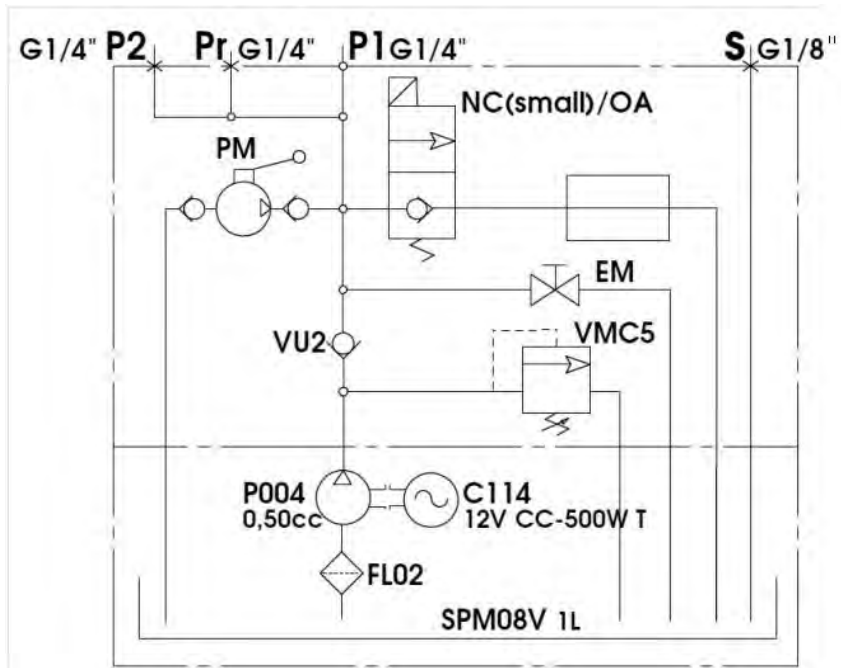
Motor Power 0.5 kW

Emergency pump YES

Section B.03 (Dimensions)



Secção B.04 (Diagramas)



SECTION C SAFETY RULES AND DEVICES

Section C.01 (General safety rules)

The operator has the responsibility of having the perfect knowledge of the unit and keep it in perfect working conditions. In case of doubts, please refer to this Manual



DANGER: - Never use the lift with the vehicle engine on and in closed spaces.

- Before starting the lift, engage the vehicle handbrake.

- The wheelchair brake **MUST** be on before starting any lifting or lowering operations on the platform lift
- The usage of the lift is forbidden in case of anomalies in its performance.
- It is absolutely forbidden to leave the lift in ON position if the operator is not there.

Section C.02 (Controls and movements)

CONTROLS: The remote control which is connected with the electric box allows the operator to control the unit from a safety distance . It works when the main switch is in “ON ” position.

Button

1. PLATFORM OPENING /LOWERING.
2. LIFTING/PLATFORM CLOSING.



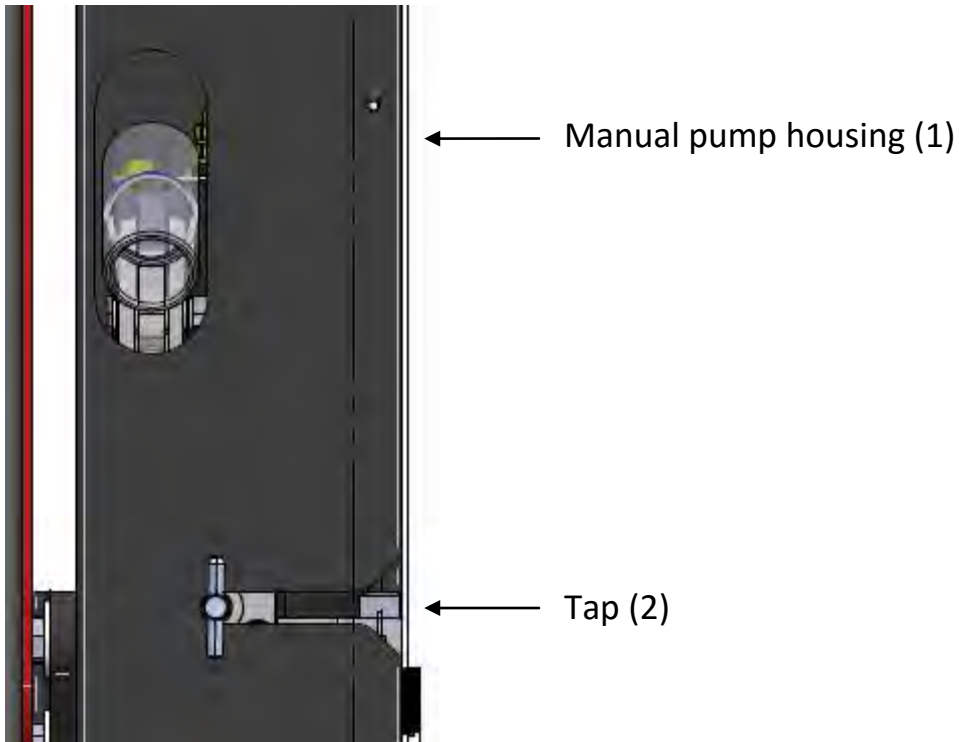
MOVEMENTS : (1-A) Platform opening: keep button 1 pressed until the complete platform opening, which stops at the same level as the vehicle floor automatically. (1-B) Repeat the previous operation , press button 1 until the platform reaches the ground. (2-A) Press button 2 to lift the platform to reach the same level as the vehicle floor. (2-B) Then press button 2 again and keep it pressed until the complete platform closing.

Section C.03 (Safety devices)

The wheelchair lift P500 is equipped with special safety devices:

- Outer ramp, it allows the wheelchair to get onto and out of the platform; it is positioned vertically and a special device lets it lower horizontally when it is at the ground level: this is in order to prevent the wheelchair from falling down of the platform
- Inner ramp, it enables the lifting/lowering of the wheelchair to/from the platform. It stays in vertical position until the platform is at the same level as the vehicle floor.
- Housings, arms and other mechanical parts are protected by specific plastic protections.
- Safety grab handles, they ensure a good support for the passenger during the lifting and lowering operations
- Safety pressure switch, it stops the lift closing if the platform is not completely empty.

Section C.04 (Emergency)



The manual pump and the tap allow a usage of the lift in case of electric system failure.

OPENING/LOWERING - Turn the tap anticlockwise(2) by just half turn to open and lower the platform; close the tap by turning clockwise to stop the platform at the desired position.

LIFTING/CLOSING - Make sure tap (2) is perfectly closed. Introduce the supplied pipe into the dedicated housing (1), and move it vertically to lift and close the platform.

SECTION D OPERATOR

Section D.01 (Qualifications)

The operator, who is assisting reduced mobility passengers, must be watchful and conscious any time. He must also be reactive in case of need for help or possible emergency situations. He must therefore fit the following qualifications

Operator's qualifications

BODY: good sense of hearing and good sight. Sense of timing and organization.

Skilfulness in performing all the necessary operations when transporting passengers who have mobility problems. The operator must be free from diseases due to drugs or alcoholic drinks.

MIND: The operator must be capable of implementing all the safety and caution rules in order to guarantee the safety for himself and the vehicle passengers. **EMOTION:** The operator is responsible for the safety of other human beings therefore he must be able to resist to panic in emergency situations that might occur and must be good in interacting with passengers in a calm and wise way.



The operator must have the total technical knowledge of the platform lift which can be achieved by reading this manual in all parts . Once the different parts of this manual have been read and understood, the operator should try the lift in EMPTY conditions several times in order to get acquainted with the movements and controls.

SECTION E MAINTENANCE

Section E.01 (General maintenance instructions)

A correct and regular maintenance ensures an efficient lift performance and a long life. Any maintenance operation is forbidden to non authorized personnel. Extraordinary repair or maintenance operations must always be carried out by authorized workshops or by the manufacturer.



Any maintenance service, either if carried out by the operator or by an authorized workshop, must be registered on the dedicated pages of this manual. ANY maintenance operation must be carried out with the general switch in the OFF position.

Section E.02 (Frequency of maintenance service)

Summary of the main maintenance operations.

Every week or whenever it is necessary:

- Clean the platform to remove any trace of dirt.

After 6 months: - check the flexible pipes to detect any damages

- check for oil leaks from joints
- check pins and joints
- check the vehicle battery charge level;
- check the electrical connections
- lubricate the platform hinges.

Every 12 months:

- check the seal of oil cylinders;
- Check the oil level in the tank when the platform is at the ground level.

Top up with hydraulic oil ISO VG32 if necessary

- check if the hydraulic joints are well fastened;
- Carry out a visual inspection to all weldings and main parts of the frame.

Section E.03 (Service coupons)

The table hereunder is to be filled in by the operator or the workshop staff whenever service operations are carried out. The action description as well as date and signature are to be registered

Description of the service operation	Date	Signature

Section E.04 (Disposal)

The disposal of all replaced parts and the used material has to be carried out by specialized agencies according to laws and rules of the country where the unit is in use.

SECTION F WARRANTY

Auto Ribeiro, Lda a warranty of 2 years from the date of delivery. This warranty covers manufacturing and quality defects but the Manufacturer has no responsibility if the unit installation has not been carried out correctly and if the instructions of this manual have not been followed properly.

