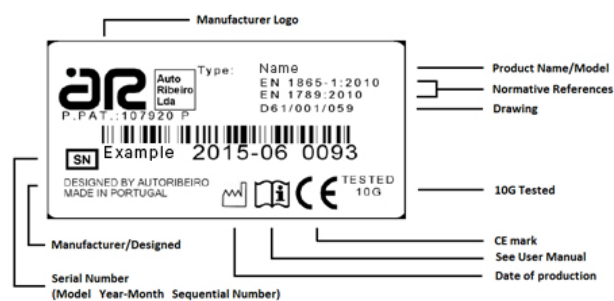




Rua de S. Caetano, 551 Apartado 526  
4411-701 Canelas; Vila Nova de Gaia, Portugal  
Telf: +351 227157100 , Fax: +351 2271244  
support@arequipment.com  
www.arequipment.com



### SERIAL NUMBER





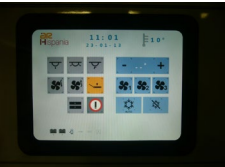

Instructions Manual:  
Electric Revolving Step



## ELECTRIC REVOLVING STEP

The electric revolving step, with a electric system actived by a switch, is developed to be used in vans in order to facilitate access of people in motor vehicles, manufactured by the company. Maximum load capacity 150 Kg.

### OPERATION MODE / APPLICATION ENVIROMENTS

Ambulances (Electric_anological board)	
	Switch located on the partition column, close to side door as shown in the photo.  O - OFF I - ON
Ambulances (Electric_Digital board) AMBULANCIAS (QUADRO ELÉTRICO_DIGITAL)	
	Driving cab panel - press the opening control of the step as shown in the photo (yellow control).
	Sanitary cell – press the opening control of the step as shown in the photo (yellow control).
PASSENGER VEHICLES / VANS IN GENERAL	
	Switch located on the column, close to the side door as shown in the photo. O - OFF I - ON



#### Note:

In all transformations is placed a lighting led, (as shown in the photo), to check the status step.

OPEN – ON

CLOSED - OFF

### WARNING



#### This equipment can be dangerous:

- This equipment is provided with a **security system** that blocks the opening/collect operation, in case of collision with an obstacle;
- When the door is closed without having been given an order to close the step, it will closed automatically.

**ATTENTION: IF THE CONTROL REMAINS ACTIVATED WHEN OPENING THE DOOR, THE STEP WILL OPEN AUTOMATICALLY.**

### MAINTENANCE

**Before performing any maintenance on the electric step, ensure power switched off.**

- Perform visual inspection every fifty cycles of utilization.
- Lubrication elements of mechanical function every six months with high viscosity lubricant
- Checking of tightness of binding elements of every three months. Proceed to ajust if necessary
- Check every three months electric components and connecting cables. Immediately terminate the using of the device if any cable or electric component is damaged. Contact the selling company to repair.