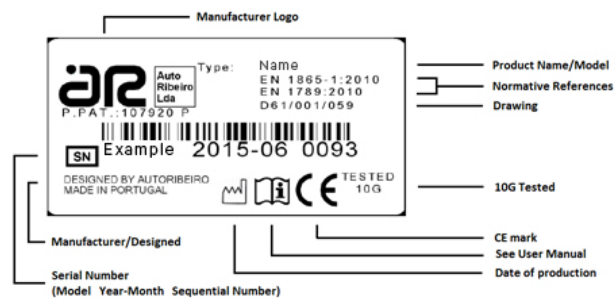




Rua de S. Caetano, 551 Apartado 526  
4411-701 Canelas; Vila Nova de Gaia, Portugal  
Telf: +351 227157100 , Fax: +351 2271244  
support@arequipment.com  
www.arequipment.com



### SERIAL NUMBER



**INSTRUCTIONS MANUAL:  
C600 – ORTOPHEDIC FOLDABLE WHEELCHAIR**



## C600 - Orthopedic foldable wheelchair

The orthopaedic foldable wheelchair is an Equipment of manual drive, developed to be used as a transport in places of difficult access. This chair is for main purpose the transport of patients with reduced mobility. This product is developed and produced by AREquipment.

### OPERATING MODE / UTILIZATION

#### Close System



1° - Press the safety red lever.



2° - Hold the red lever and the back structure and close the chair with one motion.

#### Open system



1° - Open the chair with one motion until hearing a "click".

#### Foldable Handles



1° - 4 Foldable Handles

### CHARACTERISTICS

- Weight: 7,8 kg
- Dimensions (closed): 620 x 475 x 250 mm
- Dimensions (Open): 915 x 700 x 475 mm

### ACCESSORIES



Restraint straps for Waist and legs



Carrying restraint straps



Carrying strap

### SAFETING WARNINGS



**⚠ This equipment can be dangerous:**

- Risk of entrapment
- Equipment provided with a closure string

**ATTENTION: USED ONLY BY QUALIFIED PEOPLE**



- Check if the closure is locked up before placing the patient

### MAINTENANCE ⚠

- Perform visual inspections every fifty cycles of utilization.
- Lubrication elements of mechanical function every six months with high viscosity lubricant
- Checking of tightness of binding elements of every three months. Proceed to adjust if necessary